



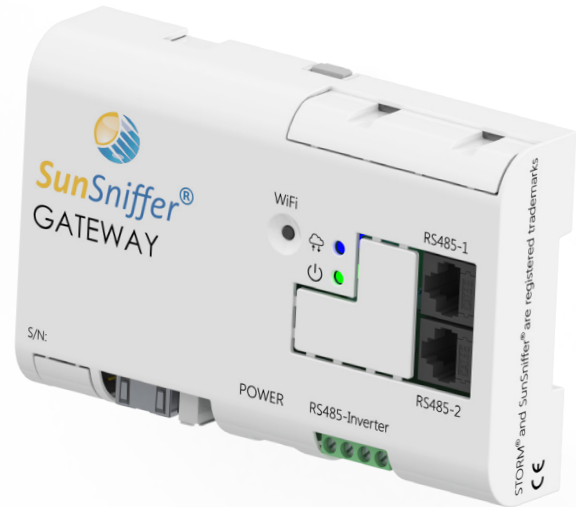
# SunSniffer® Gateway 30-String

Our Gateway is a **multiple purpose PV data transmission device**. It collects all data from the field, reads out inverters, and sends all information to the Webportal, where analysis takes place.

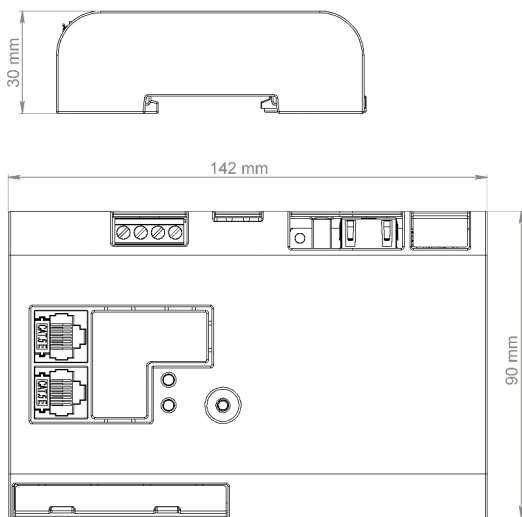
As data collector the Gateway collects the **data from each StringReader** (voltage and current), and the **data from each sensor** (voltage and temperature).

The Gateway can **read out data from up to 8 inverters** and has an optional, flexible **power reduction** functionality.

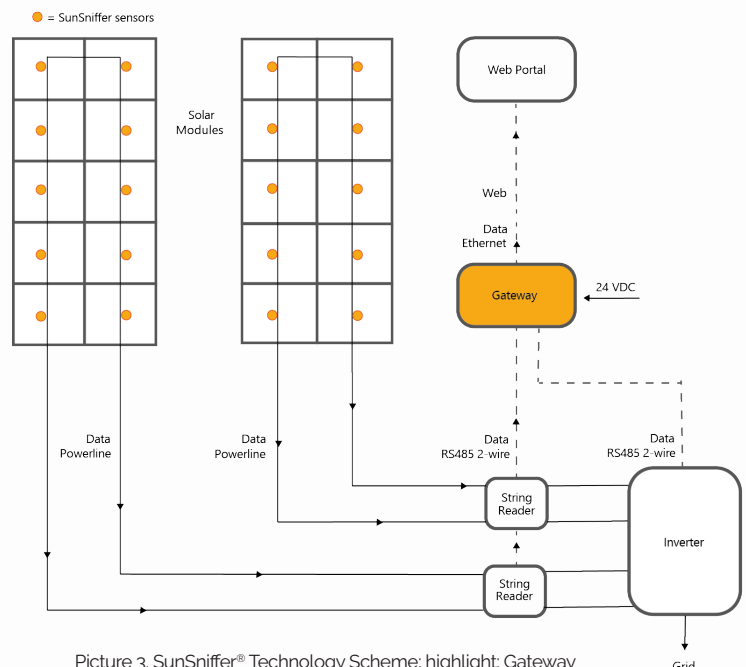
Two **"watchdogs"** prevent potential system crash: the two independent processor boards monitor each other and reboot the system if one should fail.



Picture 1. SunSniffer® Gateway



Picture 2. Gateway dimensions



Picture 3. SunSniffer® Technology Scheme; highlight: Gateway

# SunSniffer® Gateway 30-String

## HOUSING:

Dimensions (LxWxH) 142x90x30 mm  
- box (LxWxH) 160x100x34 mm

Weight 0.160 kg  
- with box 0.195 kg

Material polycarbonate,  
glass fiber reinforced

Installation DIN-Rail

Protective insulation 2

Protection class IP20

Operating temperature -25 to +60 °C

## INTERNET CONNECTION:

Interface Ethernet RJ45

IP address dynamic or static

Internet connection and power indicated by LED lights

## POWER SUPPLY:

Power supply (included) +24 V DC

Gateway consumption <5 W

Consumption per attached String Reader <0.5 W

## TECHNICAL SPECIFICATIONS:

RS485 communication channels 3

Supported protocols over RS485 MODBUS RTU

RS485 baud rate range 1200 up to 115200 Bd

Maximum attached String Readers (N<sub>STR</sub>) up to 30 pcs.

Maximum inverters (N<sub>INV</sub>) up to 8 pcs.

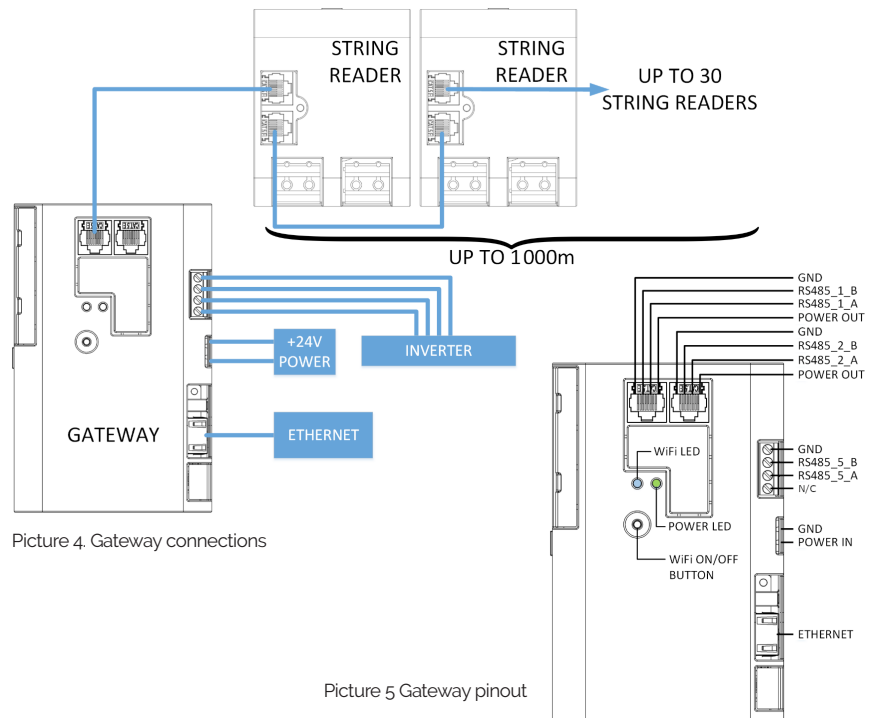
Maximum RS485 cable length pls. refer to StringReader data sheet

*Quality-of-Service:* "Watchdogs" for system crash prevention  
Device contains two independent processor boards, which monitor each other constantly and are able to reboot the system if the other one crashed.  
= Quality assurance for hardware  
= Quality assurance for RS485 data volume transmission

## CONNECTIONS:

3 RS485 communication channels for StringReader or irradiation sensor connection; use channel RS485-Inverter for inverter connection only

WiFi button for switching-on a Hot Spot to the internal configuration Web Server



**>>> Attention!** Plant specifications stated by the customer in the „Compatibility Sheet“ have to be followed. Any deviation will lead to loss of warranty. The installation must be carried out by a specialist. In the event of improper installation, the warranty expires and no liability is assumed. <<<

SunSniffer GmbH & Co. KG  
Ludwig-Feuerbach-Str. 69  
90489 Nürnberg | Germany

[www.sunsniffer.de](http://www.sunsniffer.de)